



CAUTION

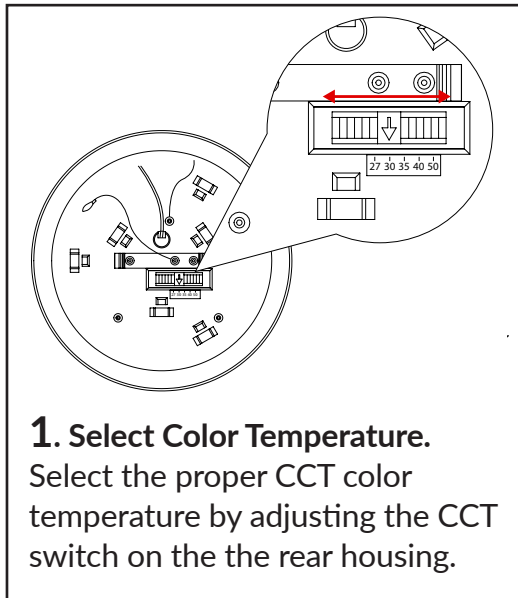
Turn off the main power at the circuit breaker before installing the fixture in order to prevent possible shock. If you are unfamiliar with proper electrical wiring connections, obtain the services of a qualified electrician.

GENERAL

Read all instructions carefully for safe operation and installation. All electrical connections must be in accordance with local and national electrical code (N.E.C.) standards. Remove the fixture and mounting package from the box. Make sure no parts are missing by referencing the illustrations on these Installation Instructions. Please contact Blackjack Lighting at 847-941-0588 if any parts are missing or damaged.

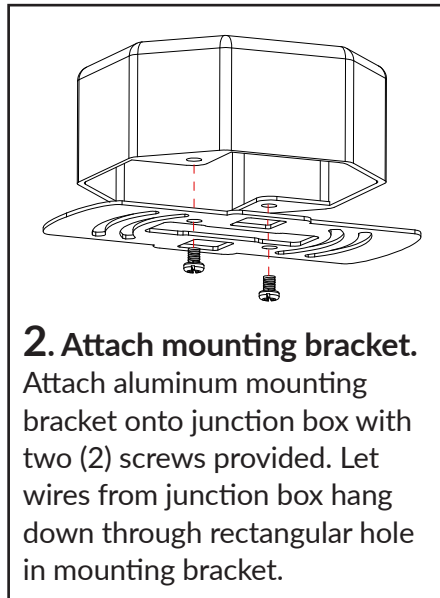
Fixture parts included:

One housing with integrated LED light source and acrylic diffuser; One aluminum junction box mounting bracket.



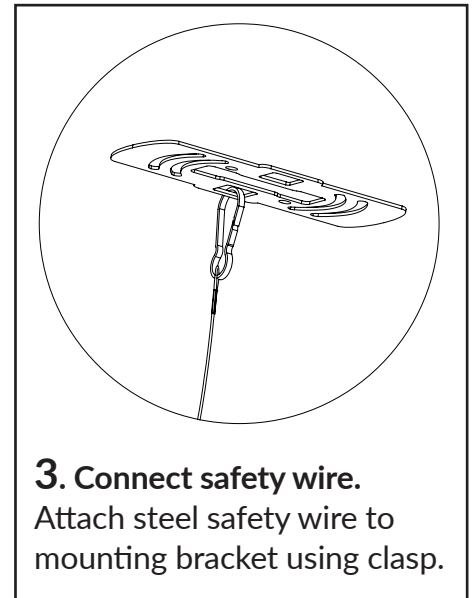
1. Select Color Temperature.

Select the proper CCT color temperature by adjusting the CCT switch on the the rear housing.



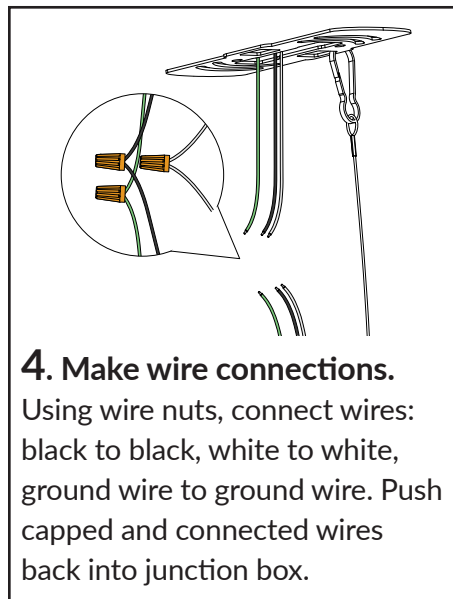
2. Attach mounting bracket.

Attach aluminum mounting bracket onto junction box with two (2) screws provided. Let wires from junction box hang down through rectangular hole in mounting bracket.



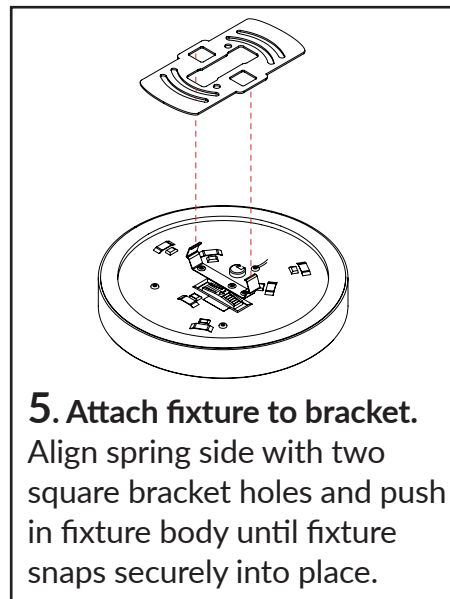
3. Connect safety wire.

Attach steel safety wire to mounting bracket using clasp.



4. Make wire connections.

Using wire nuts, connect wires: black to black, white to white, ground wire to ground wire. Push capped and connected wires back into junction box.



5. Attach fixture to bracket.

Align spring side with two square bracket holes and push in fixture body until fixture snaps securely into place.

