



### CAUTION

Turn off the main power at the circuit breaker before installing the fixture in order to prevent possible shock. If you are unfamiliar with proper electrical wiring connections, obtain the services of a qualified electrician.

### GENERAL

Read all instructions carefully for safe operation and installation. All electrical connections must be in accordance with local and national electrical code (N.E.C.) standards. Remove the fixture and mounting package from the box. Make sure no parts are missing by referencing the illustrations on these Installation Instructions. Please contact Blackjack Lighting at 847-941-0588 if any parts are missing or damaged. This product is suitable for DAMP locations.

## PARTS & ACCESSORIES LIST

**NOTE:** 2 suspension assemblies are required for 2-ft. to 4-ft. lengths.  
3 suspension assemblies are required for between 4-ft. and 8-ft. lengths.



8#-32  
Screws (2)



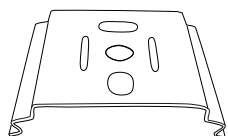
M4\*8  
Screws (2)



Waterproof  
Connector (1)



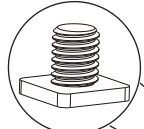
Twist-On Wire  
Connectors (5)



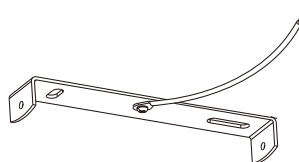
(L) Hanging Clip (2)



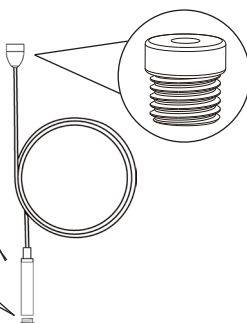
Gripper



M5 T-Type  
Nuts

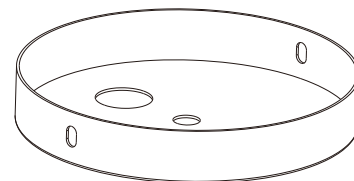


U-Bracket  
with Ground Wire (1)

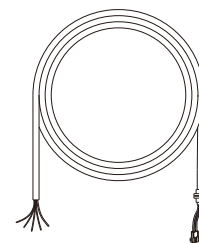


Cable  
Support

Suspension Assembly  
w/Ceiling Mount (2)  
(3 for 8-ft. fixture)



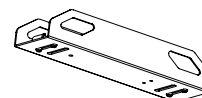
Canopy (1)



AC Input Cable (1)



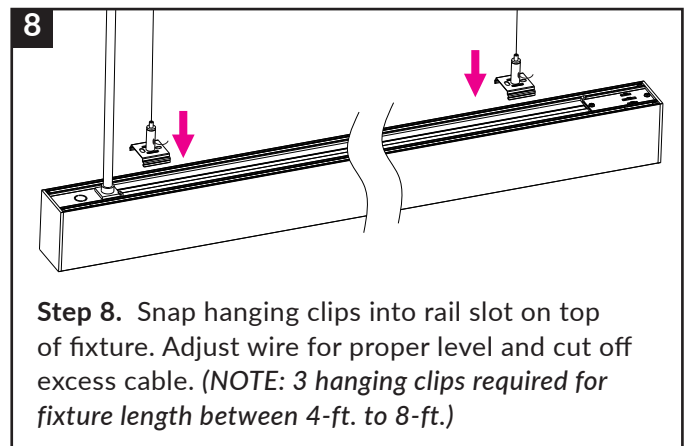
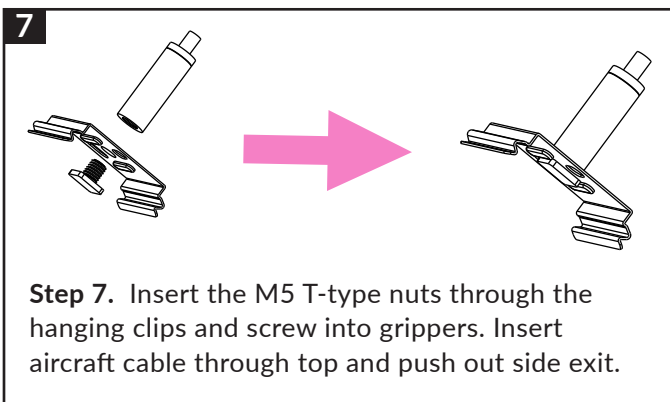
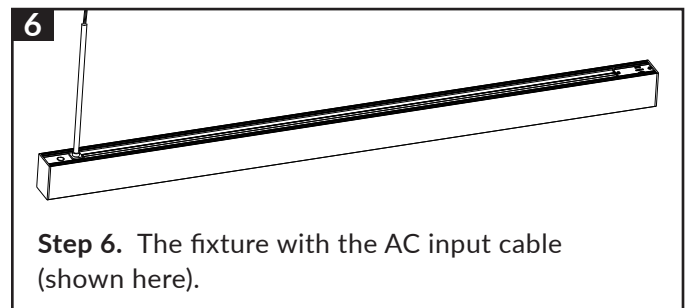
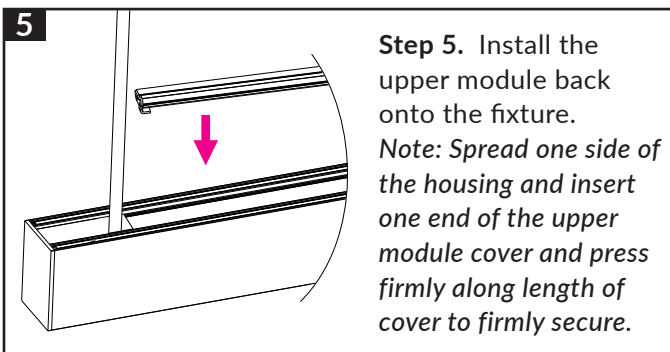
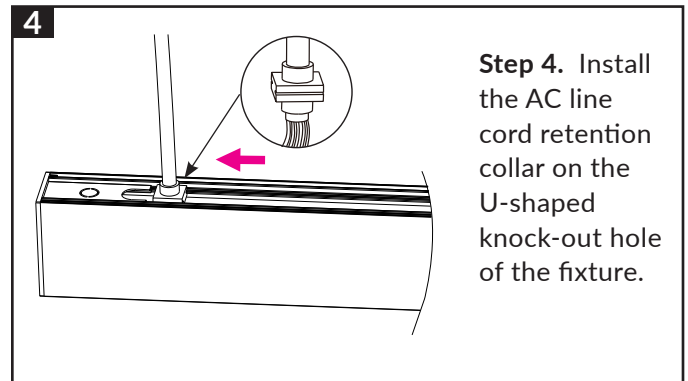
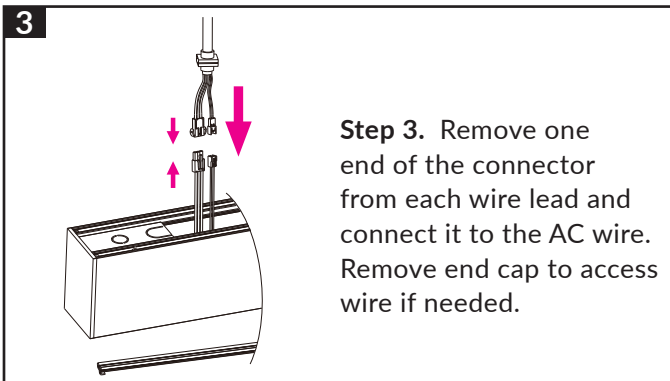
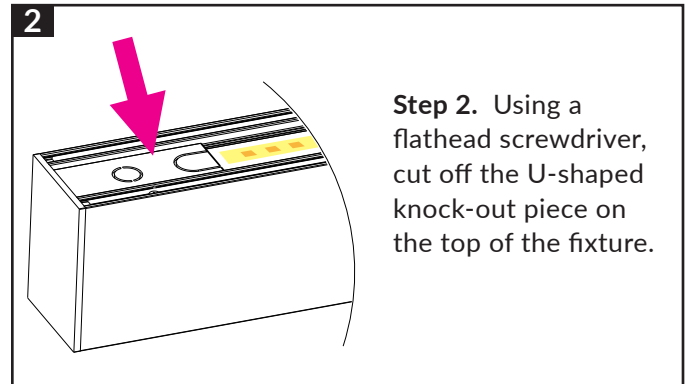
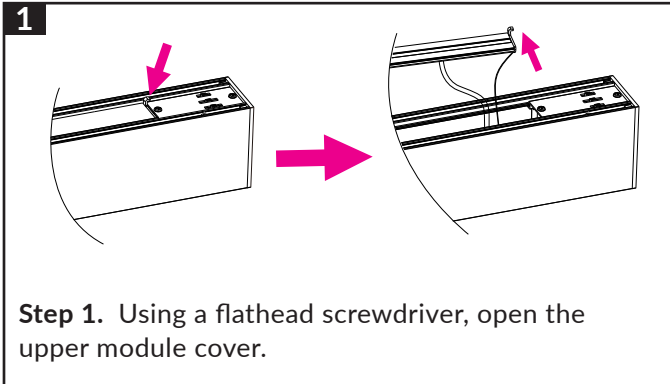
Left & Right Shielding Plates  
(Included only with runs of  
multiple pendants)



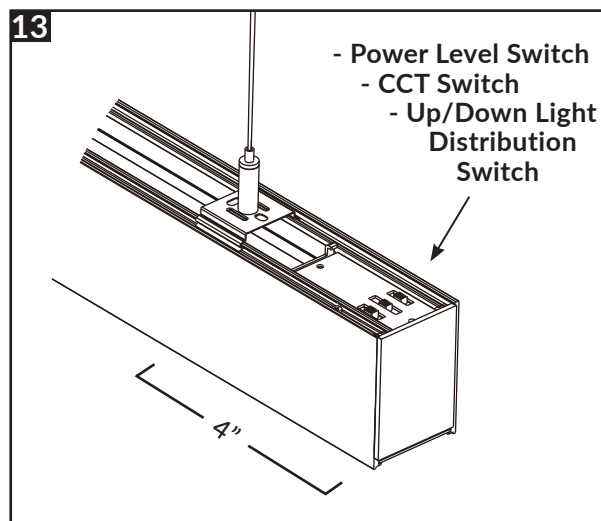
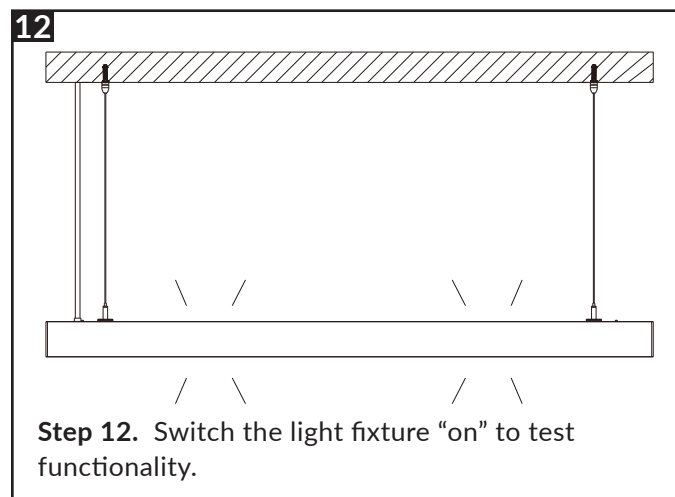
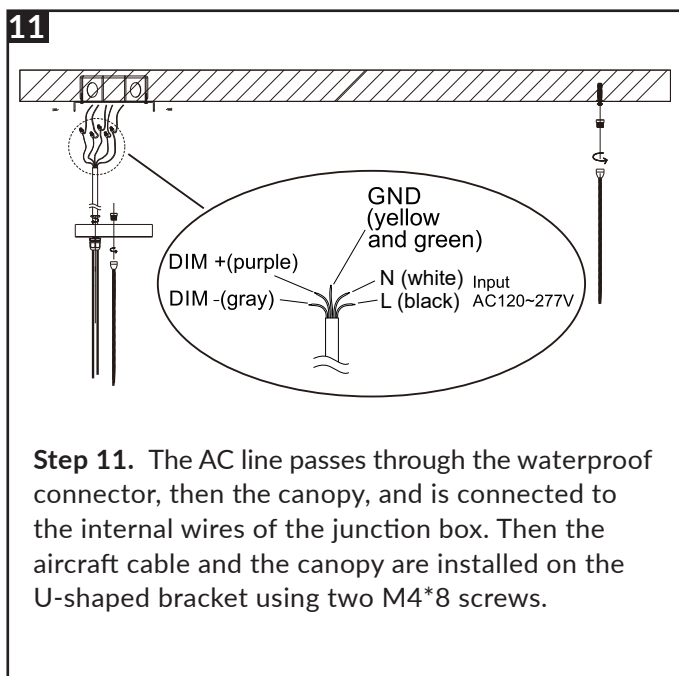
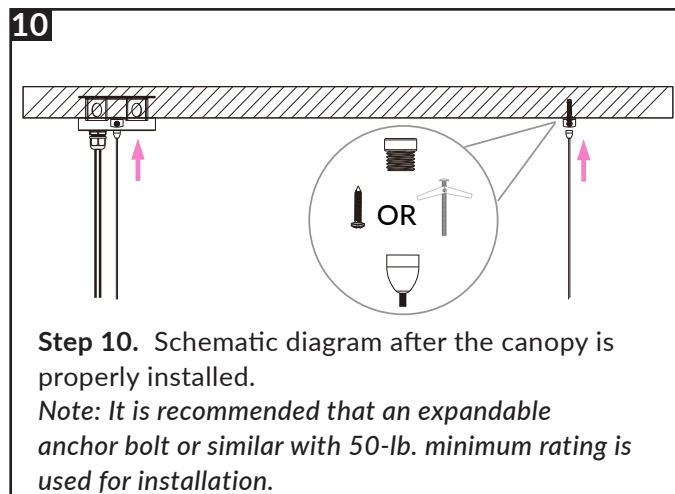
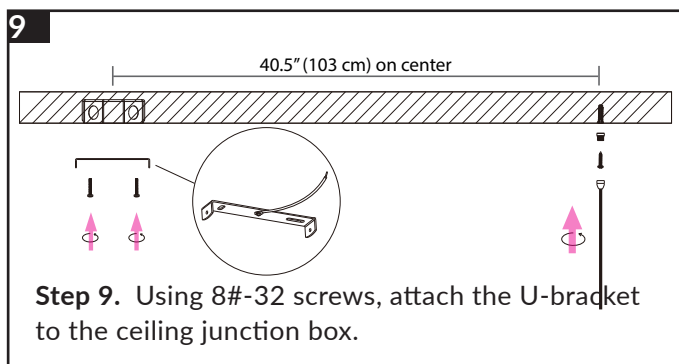
Internal Connector  
(Included only with runs of  
multiple pendants)

Shielding plates and connector only provided for multiple pendant runs.

### INSTALLATION for SUSPENDED AIRCRAFT CABLE MOUNTING



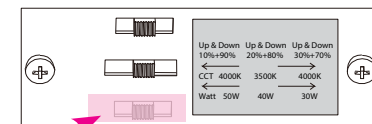
### INSTALLATION for SUSPENDED AIRCRAFT CABLE MOUNTING *(continued)*



**Step 13.** Attach hanging clip approximately 4" from end cap. Then adjust power output, CCT output, and up/down switch as desired.

#### NOTE

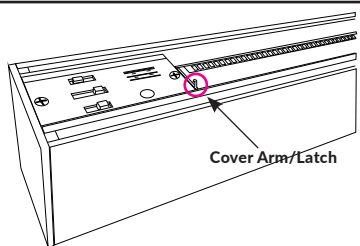
Decal has been placed over the Up/Down switch, for it to remain in the Down Only position.



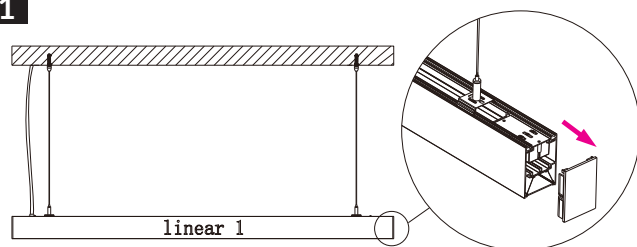
### INSTALLATION of MULTIPLE PENDANTS

#### NOTE

If linear 1 is already mounted to the ceiling, detach it from the mounting clips. Allow the fixture to hang from the safety wires. Then, at the arm/latch, use flathead screwdriver to remove the top module cover.

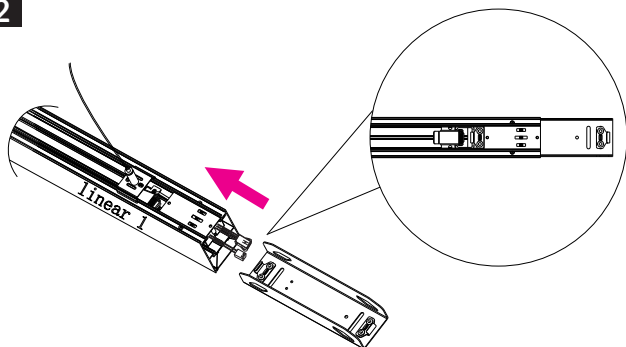


1



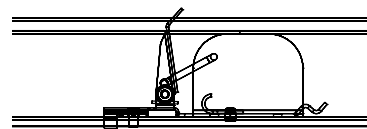
**Step 1.** Remove one end cap, as well as the uplight module/blank, from first powered fixture (linear 1).

2



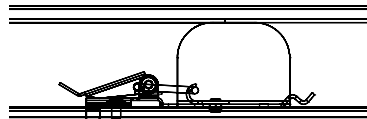
**Step 2.** Slide hanging clip away from end of fixture. Pull out interconnecting cables. Insert internal connector into the fixture body, and use spring latch to fasten the hook.

2A



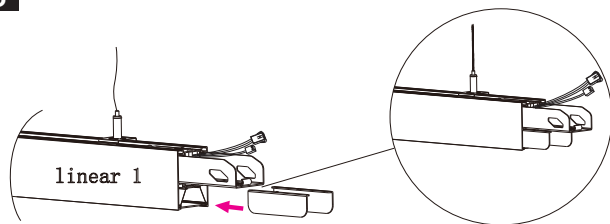
**Step 2A.** Pull back lever on internal spring latch.

2B



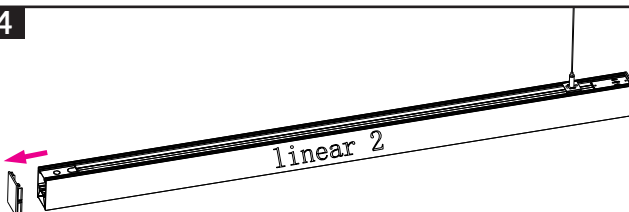
**Step 2B.** Secure joiner on internal spring latch.

3



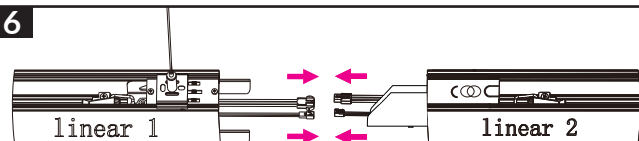
**Step 3.** Insert the left and right shielding plates into the fixture body, respectively.

4



**Step 4.** Attach hanging clips with aircraft cable to linear fixture 2. Remove end cover of linear fixture 2.

6

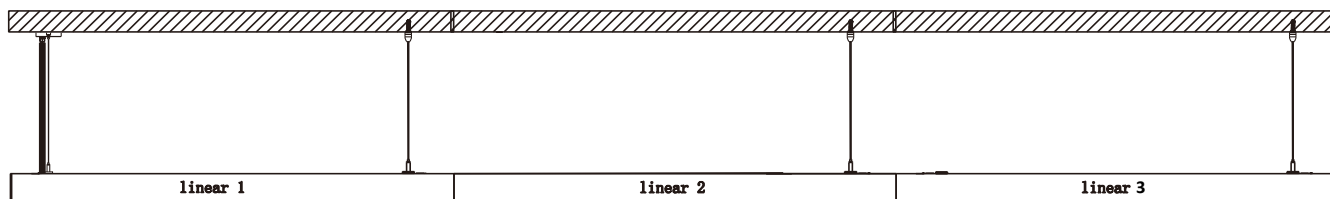


**Step 6.** Connect the joiner (see Steps 2A and 2B) and the 3-wire bundle (green, black, white) and the 2-wire bundle (if required) between linear fixture 1 and linear fixture 2. Re-attach upper module cover on linear fixtures 1 and 2.



**Step 5.** Remove upper module cover of linear fixture 2. Insert joiner (See 2A & 2B, above).

8



**Step 8.** Follow the steps above to connect fixtures together. The fixtures in the middle can be connected to both sides. After the connection is completed, adjust the balance of the fixtures using the aircraft cable, and once it is level, you can power on the fixture.

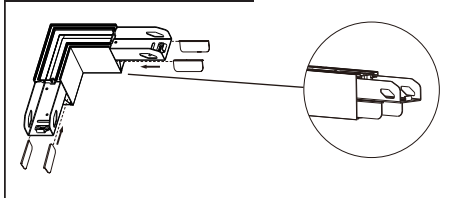
**NOTE:** 2 suspension assemblies should be placed every 4 feet, on center, minimum.

**NOTE:** Maximum run length not to exceed 720W.

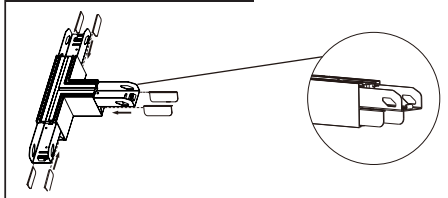
30W = (24) 4-ft. fixtures / 40W = (18) 4-ft. fixtures / 50W = (14) 4-ft. fixtures

## INSTALLATION of SHORT-LENGTH L/T/X SPLICING COMPONENTS with DUAL-SIDE ILLUMINATION

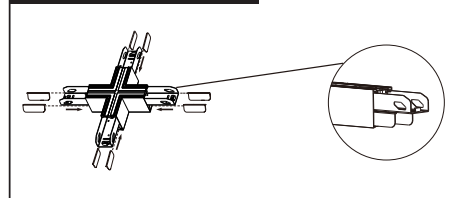
### L CONNECTOR



### T CONNECTOR



### X CONNECTOR



## SPLICING DIAGRAM

