

### CAUTION

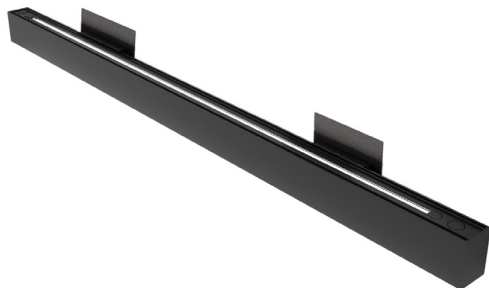
Turn off the main power at the circuit breaker before installing the fixture in order to prevent possible shock. If you are unfamiliar with proper electrical wiring connections, obtain the services of a qualified electrician.

### GENERAL

Read all instructions carefully for safe operation and installation.

All electrical connections must be in accordance with local and national electrical code (N.E.C.) standards.

Remove the fixture and mounting package from the box. Make sure no parts are missing by referencing the illustrations on these Installation Instructions. Please contact Blackjack Lighting at 847-941-0588 if any parts are missing or damaged. This product is suitable for DAMP locations.



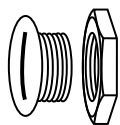
## PARTS & ACCESSORIES LIST



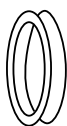
8#-32  
Screws (2)



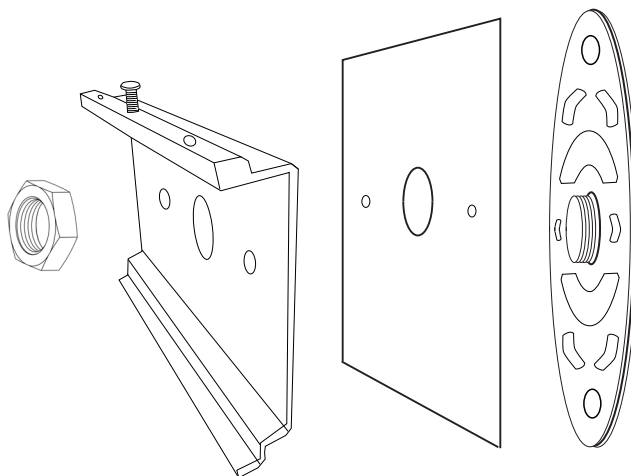
Twist-On Wire  
Connectors (5)



Threaded Metal  
Hole Plug (1)



Rubber Grommet  
(1)

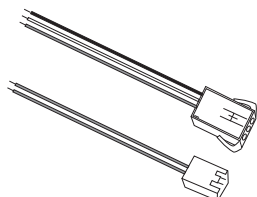


### For 2-ft. or 4-ft. Fixture:

Canopy Mounting Round Crossbar Assembly (1),  
Square Decorative Cover Plate (2),  
Rectangular Wall Bracket (2)

### For 8-ft. Fixture:

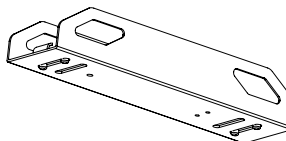
Canopy Mounting Round Crossbar Assembly (1),  
Square Decorative Cover Plate (3),  
Rectangular Wall Bracket (3)



AC Input Cables  
(1 set of 2)



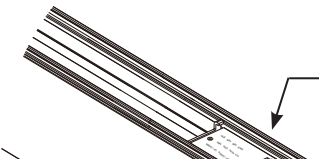
Left & Right Shielding Plates  
(Included only with runs of  
multiple pendants)



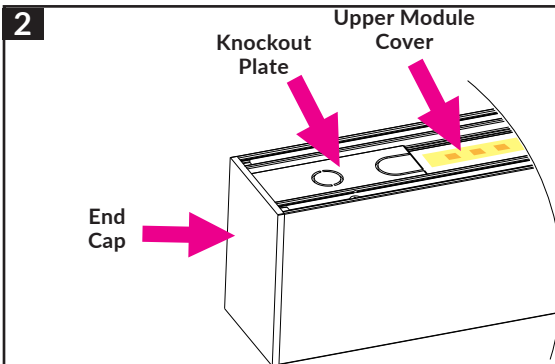
Internal Connector  
(Included only with runs of  
multiple pendants)

*Shielding plates and connector only provided for multiple pendant runs.*

## INSTALLATION for SURFACE MOUNTING

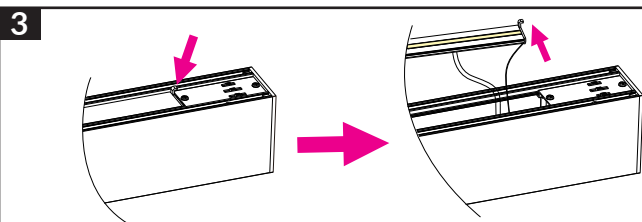
- 1**
- 
- Power Level Switch
  - CCT Switch
  - Up/Down Light Distribution Switch

**Step 1.** Adjust power output switch, CCT switch, and Up/Down switch to desired positions.

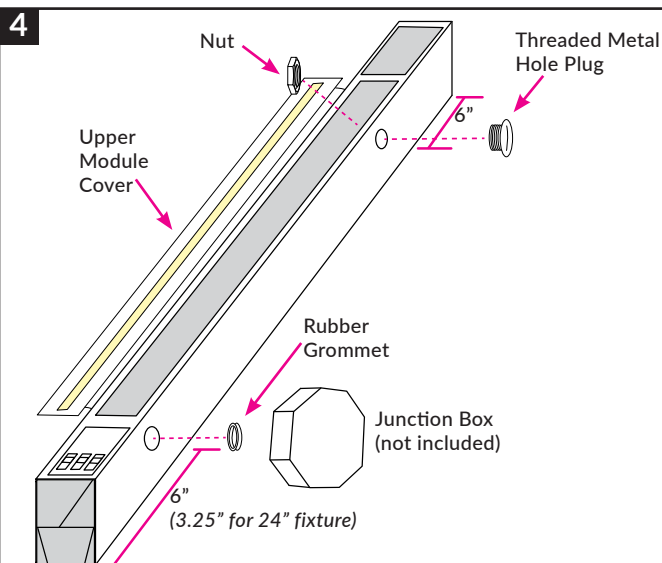


**Step 2A.** Locate Power Feed side of fixture. Remove the end cap from the fixture.

**Step 2B.** If needed, slide out and remove the knockout plate temporarily for access to wires.

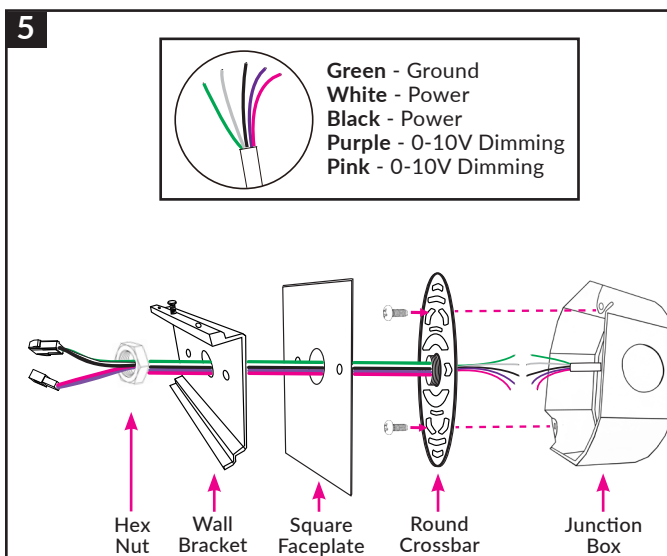


**Step 3.** Use a flathead screwdriver to open the upper module cover of the fixture to access wires.



**Step 4.** The opening for the power input on the rear side should be centered on the middle of the wall-mounted junction box. Measure 6" on center from each end of fixture (3.25" on center for 24" fixture).

**NOTE:** The rubber grommet and threaded metal hole plug can switch locations if the junction box needs to be mounted on opposite end of fixture (48" and 96" fixtures only).



**Step 5A.** Feed 3-wire input cable and optional 2-wire dimming cable through nut, wall bracket, square faceplate, and round crossbar.

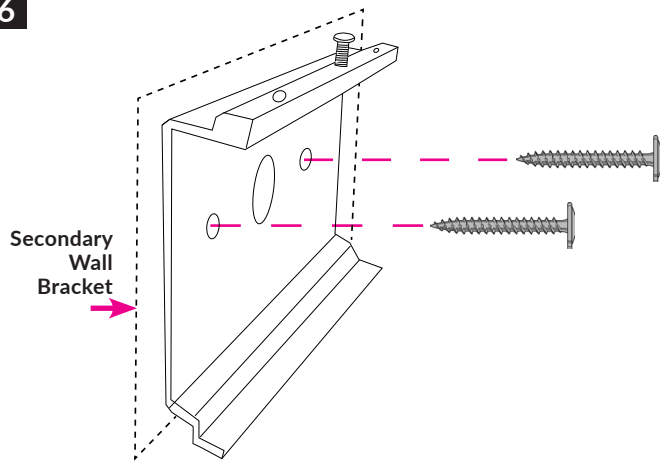
**Step 5B.** Connect 3-wire AC Input Cable to wires in junction box. Connect optional 2-wire dimming wires to wires in junction box.

**Step 5C.** Attach round crossbar to junction box with two screws, provided.

**Step 5D.** Attach wall mounting bracket and square faceplate to round crossbar by screwing on hex nut until secure.

## INSTALLATION for SURFACE MOUNTING (continued)

6

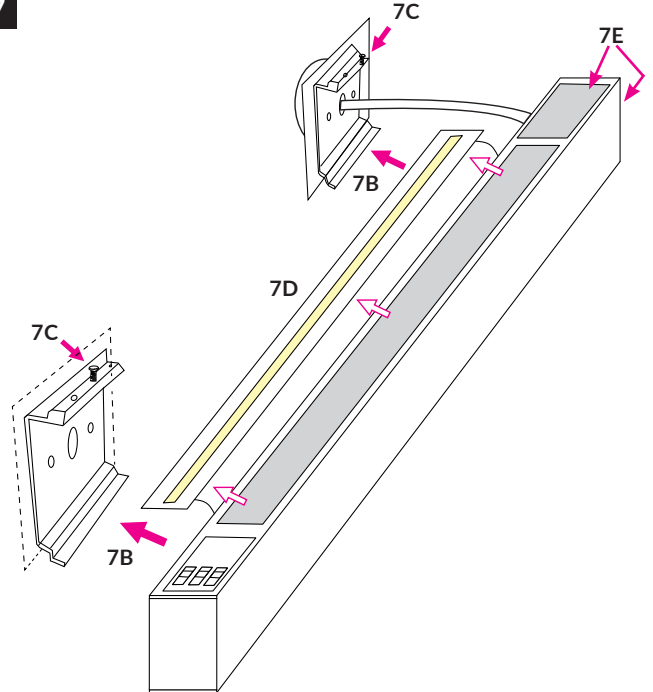


**Step 6A.** Align second wall mounting bracket with first wall bracket.

**Step 6B.** Screw in fasteners (not provided) through wall bracket into wall where previously marked – 6" on center from the other end of the fixture. Use a level to make sure fixture will be straight.

**Step 6C.** Optional: Square Decorative Faceplate. If used with secondary wall bracket, installer will need to drill two holes to attach fasteners into the wall. Holes should match hole pattern of rectangular wall bracket.

7



**Step 7A.** With the upper module cover off, feed the 3-wire input cable and optional 2-wire dimming cable through rear grommet and attach connectors inside fixture.

**Step 7B.** Push the linear fixture down onto the bottom lip of both wall brackets. Rotate the fixture back into the wall bracket. Push the power cable into the fixture or into the junction box to allow fixture to sit flush against back of wall brackets.

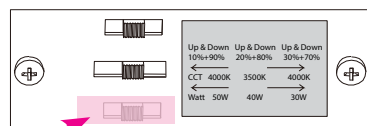
**Step 7C.** Tighten set screw on the top of the wall brackets until fixture is securely in place.

**Step 7D.** Once the fixture is installed on mounting brackets, re-install upper module cover until it snaps into position and is flush with top of fixture.

**Step 7E.** Re-install top knockout plate and end cap.

### NOTE

Decal has been placed over the Up/Down switch, for it to remain in the Down Only position.

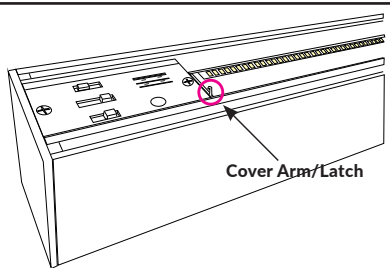


### INSTALLATION of MULTIPLE PENDANTS (For 4-ft. and 8-ft. fixtures only)

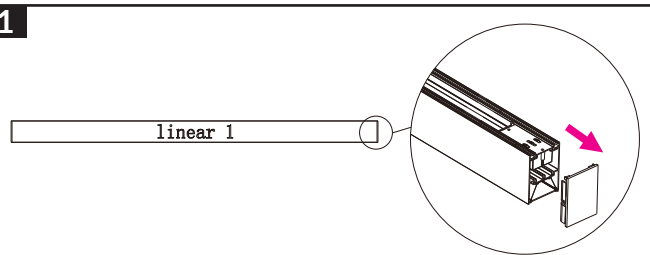
#### NOTE

If linear 1 is already mounted to the wall, gently rock the fixture back and forth and pull to detach it from the mounting clips.

Then, at the arm/latch, use flathead screwdriver to remove the upper LED module cover.

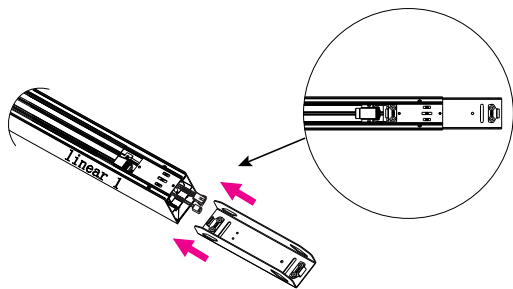


1



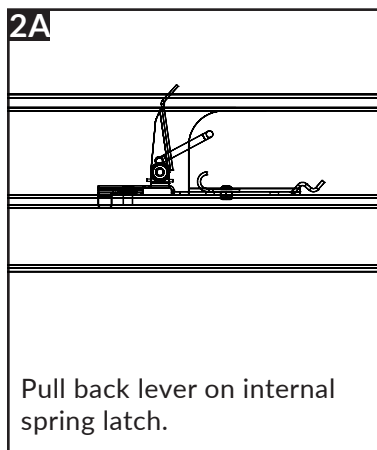
**Step 1.** Remove one end cap from switch end of the first powered fixture (linear 1).

2



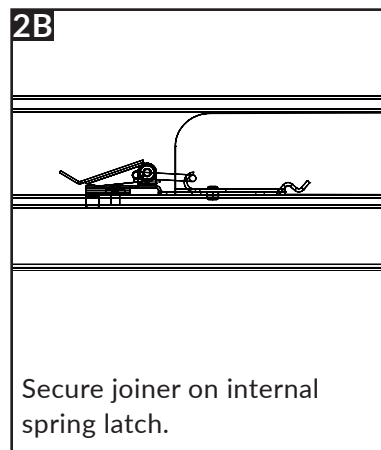
**Step 2.** Pull out interconnecting cables. Insert internal connector into fixture body, and use internal snap spring to fasten the hook.

2A



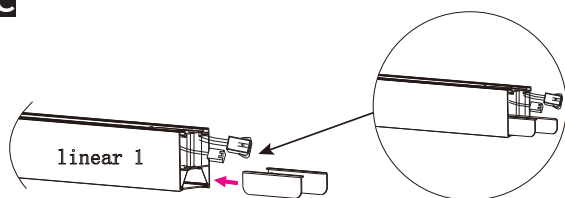
Pull back lever on internal spring latch.

2B



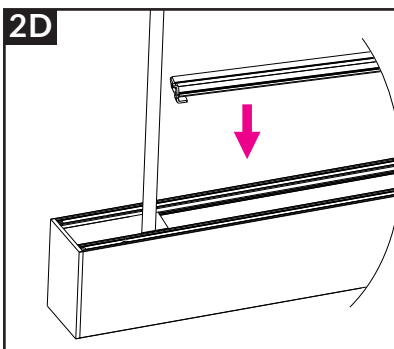
Secure joiner on internal spring latch.

2C



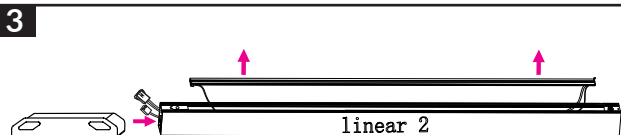
**Step 2C.** Insert the left and right shielding plates into the bottom corners of the fixture body, respectively.

2D



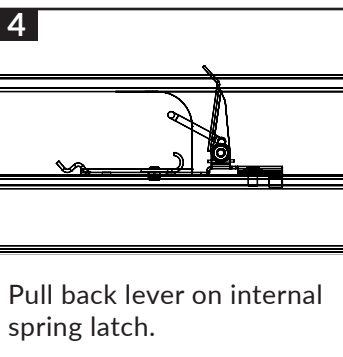
**Step 2D.** Install the upper module back onto linear fixture 1. *Note: Spread one side of the housing and insert one end of the upper module cover and press firmly along length of cover to firmly secure.*

3



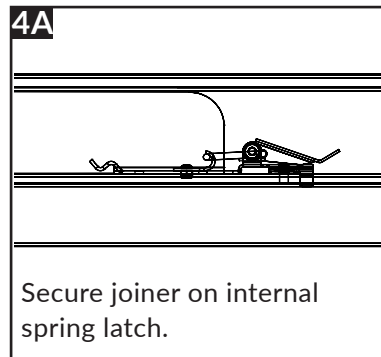
**Step 3.** Remove end cap of linear fixture 2. Remove upper module cover of linear fixture 2. Insert joiner (See Steps 2A & 2B, above).

4



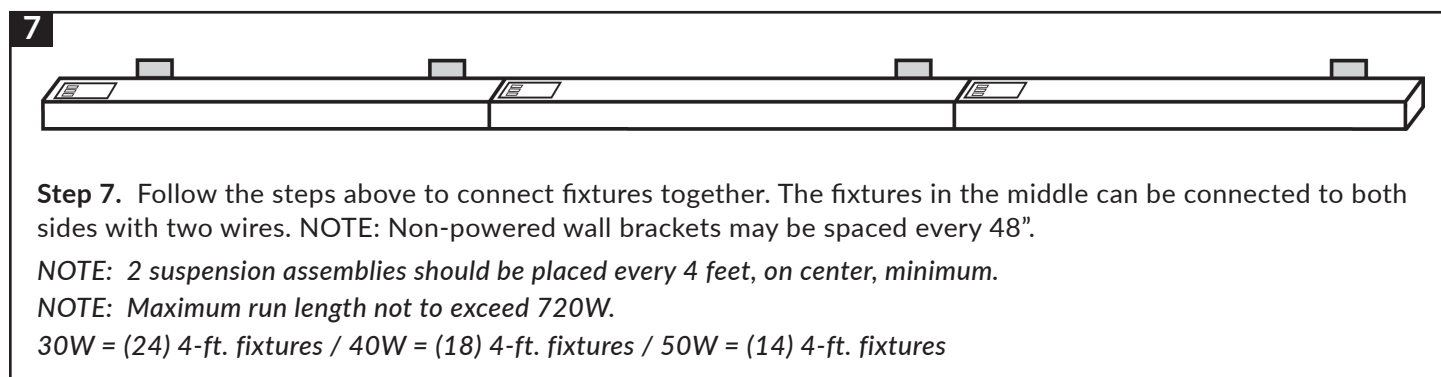
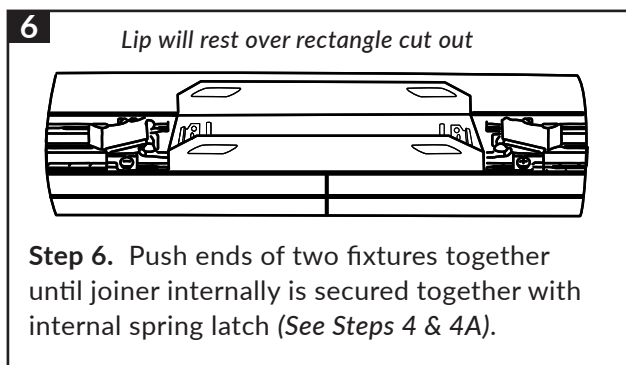
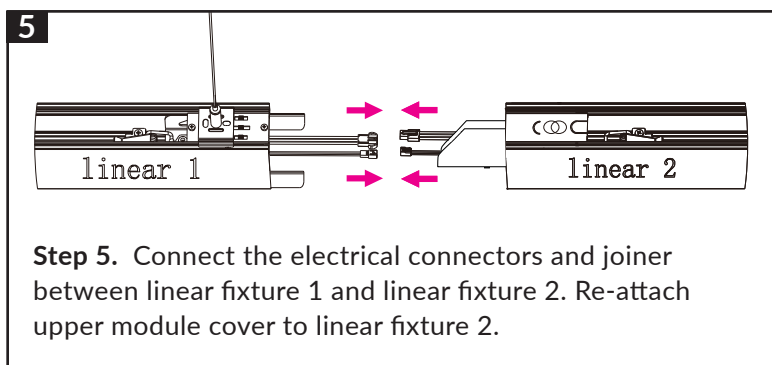
Pull back lever on internal spring latch.

4A



Secure joiner on internal spring latch.

### INSTALLATION of MULTIPLE PENDANTS (For 4-ft. and 8-ft. fixtures only)



### INSTALLATION of SHORT-LENGTH L/T/X SPLICING COMPONENTS with DUAL-SIDE ILLUMINATION

