



CAUTION

Turn off the main power at the circuit breaker before installing the fixture in order to prevent possible shock. If you are unfamiliar with proper electrical wiring connections, obtain the services of a qualified electrician.

GENERAL

Read all instructions carefully for safe operation and installation.

All electrical connections must be in accordance with local and national electrical code (N.E.C.) standards.

Remove the fixture and mounting package from the box. Make sure no parts are missing by referencing the illustrations on these Installation Instructions. Please contact Blackjack Lighting at 847-941-0588 if any parts are missing or damaged. This product is suitable for DAMP locations.

PREPARATION

1. Remove the fixture from its box.

2. Pull the supply wires(2&5) and house ground(6) wires out from the junction box(1) and thread them through the center hole in the mounting bracket(10). Then attach the mounting bracket(10) to the junction box(1) using the mounting screws(9).

MOUNTING

3. Loosen strain relief screw(14) and adjust the fabric-covered wire(15) to the required length. Wind the excess wire into a loop, then secure it together with the included Velcro strap so that it doesn't come undone. Then tuck it into the canopy(12).

4. If wire does not fit into canopy, then cut wire to proper size and trim outer insulation to expose two wires. Strip the end of each to 7/16" and connect to the same color supply wire.

5. To cut fabric wire to shorter length, *see Figure 2*. To avoid fabric fraying, adjust the gripper to the position desired. Wrap electrical tape 10" above gripper. Cut the cord in the middle of the tape. Wrap tape 4" below the cut. Insert cord into canopy hole and secure the gripper with the nut. Carefully cut and peel only the outside jacket of the cord to expose individual wires; strip wire ends to expose 7/16" of stranded wire.

ELECTRICAL CONNECTIONS

6. (*See Figures 2&3*) Using the wire connectors(8), connect the white supply wire(2) to the white fixture wire(3); connect the black supply wire(5) to the black fixture wire(4); and connect the house ground wire(6) to the fixture ground wire(7). Tuck the wires back into the outlet box(1).

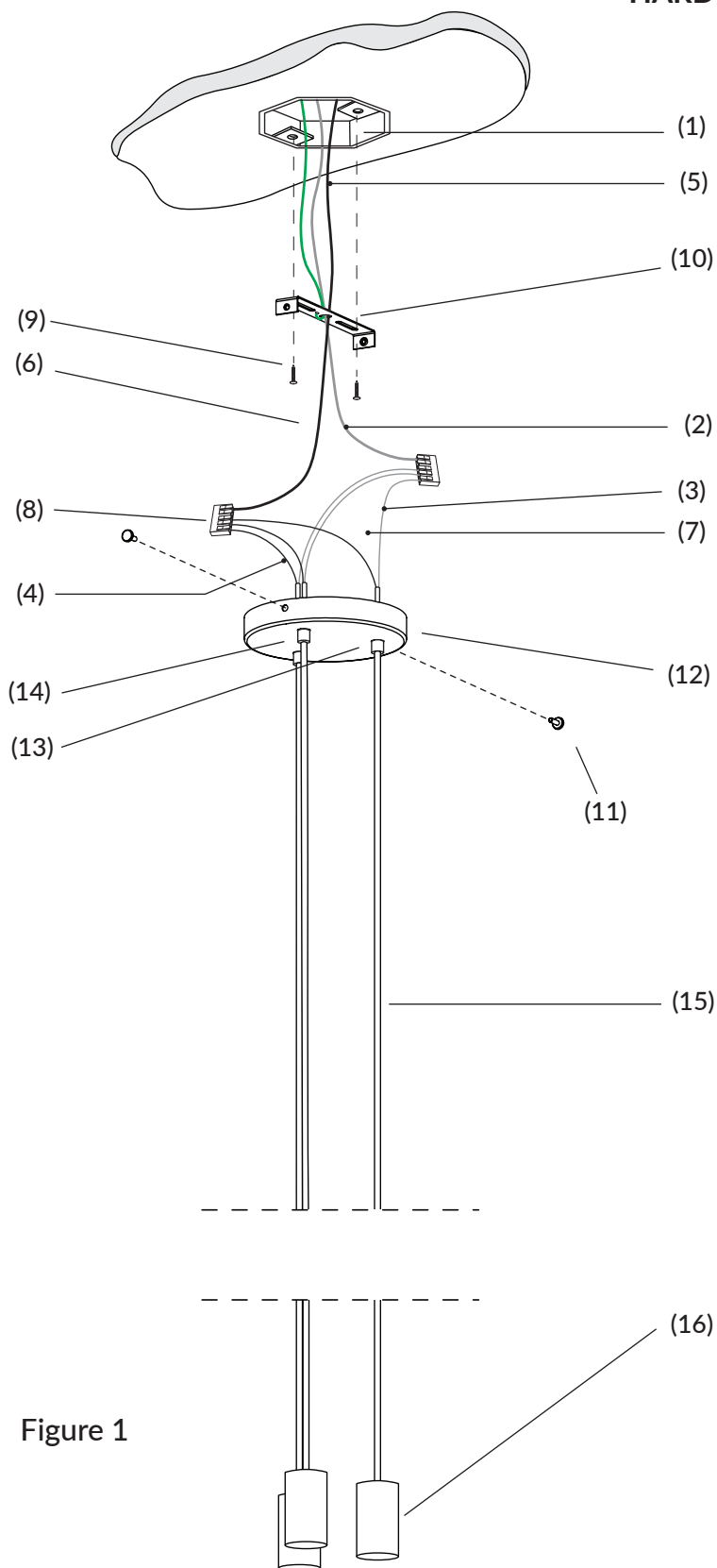
7. To secure the mounting bracket(10) to the junction box(1) with mounting screws(9): Align the holes on the side of the canopy (12) with the threaded grippers(13) secured to the mounting bracket(10). Then insert and tighten the canopy screws(12) into the mounting bracket(10) to secure everything together.

FINAL ASSEMBLY

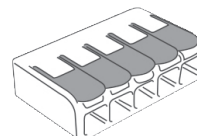
8. Screw swag hook (optional) securely into ceiling or support beam. Pull cord through to desired slack and length. *See Figure 4*.

9. Insert the lightbulb (not included with the E26 socket kit) into the fixture socket.

HARDWARE



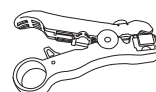
Mounting Screw (#9)
Qty. Included: 2



5-Port WAGO Connector (#8)
Qty. Included: 2



Canopy Screw (#11)
Qty. Included: 2



Cord Cutter (optional)
Order Separately:
No. 99051

1. JUNCTION BOX
(supplied by others)
2. WHITE SUPPLY WIRE
3. WHITE FIXTURE WIRE
4. BLACK FIXTURE WIRE
5. BLACK SUPPLY WIRE
6. HOUSE GROUND WIRE
7. FIXTURE GROUND WIRE
8. WAGO CONNECTOR
9. MOUNTING SCREWS
10. BRACKET
11. CANOPY SCREWS
12. CANOPY
13. GRIPPER
14. STRAIN RELIEF SCREW
15. FABRIC-COVERED WIRE
16. E26 SOCKETS

Figure 1

Instructions on how to cut and splice the pendant cables (if not using optional Cord Cutter No. 99051):

Figure 2

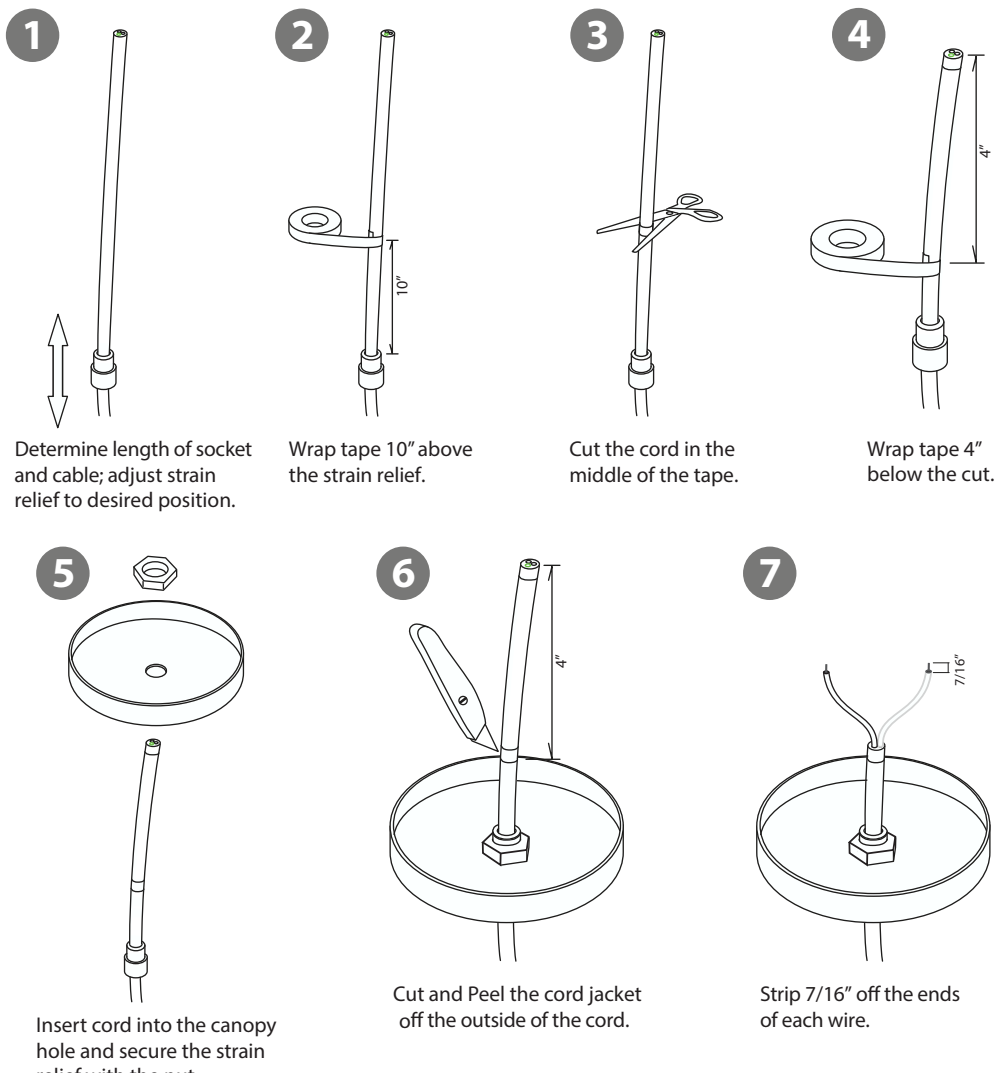
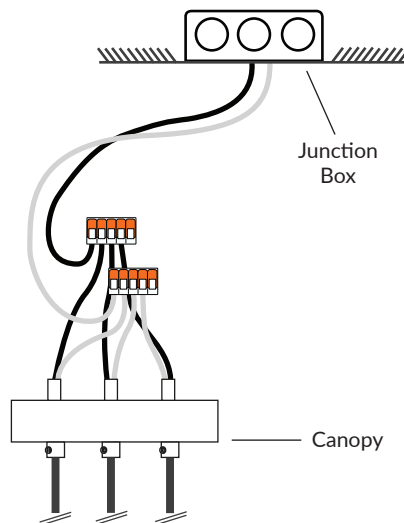


Figure 3

Illustration showing the multi-splice inside of the canopy



Instructions to install Swag Hook (optional):

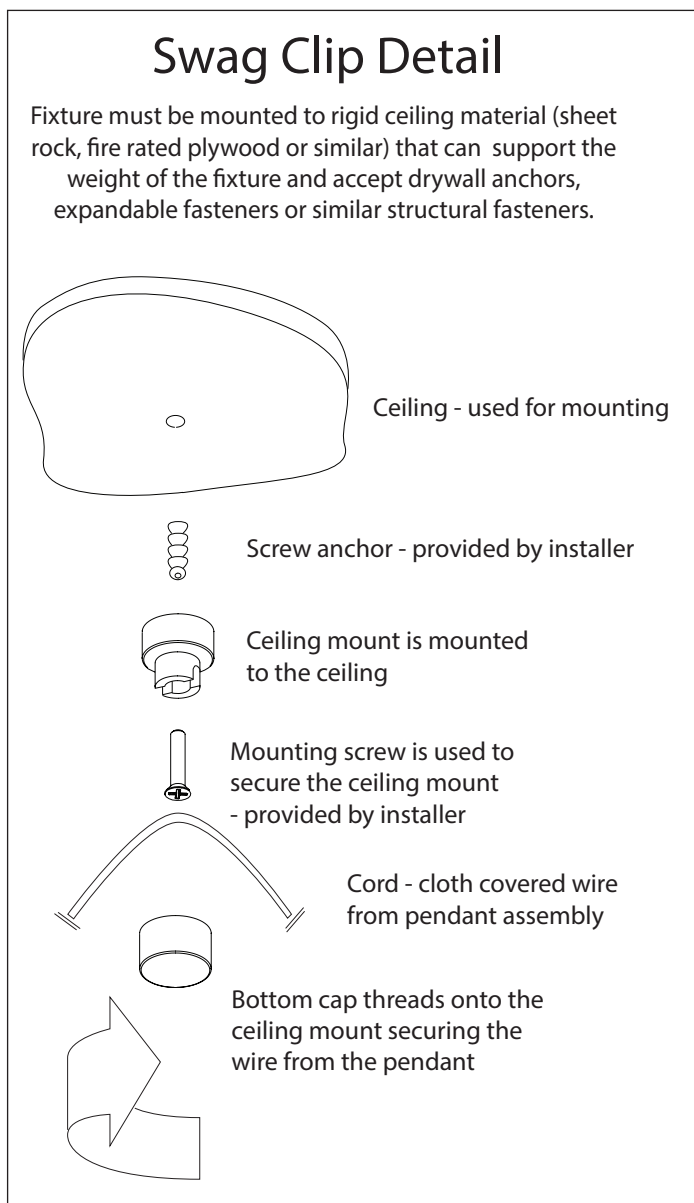


Figure 4.

Instructions to install Extension Stem Kit (optional):

1. Remove strain relief cap from top of socket cover.
2. Slide extension stem(s) over end of fabric cable and screw onto strain relief on top of socket cover. It helps to twist stem while sliding.
3. Slide sloped ceiling swivel over end of fabric cable and screw onto extension stem. It helps to twist swivel while sliding.
4. Screw sloped ceiling swivel onto canopy.

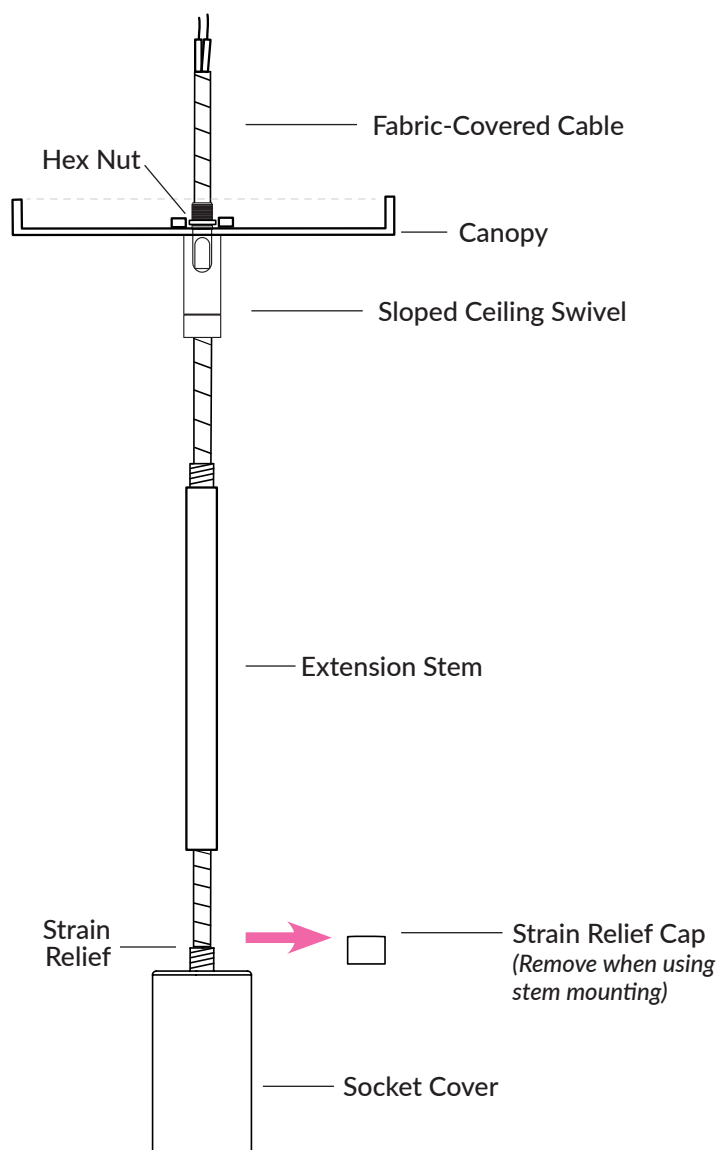


Figure 5. Exploded view of Extension Stem Kit.